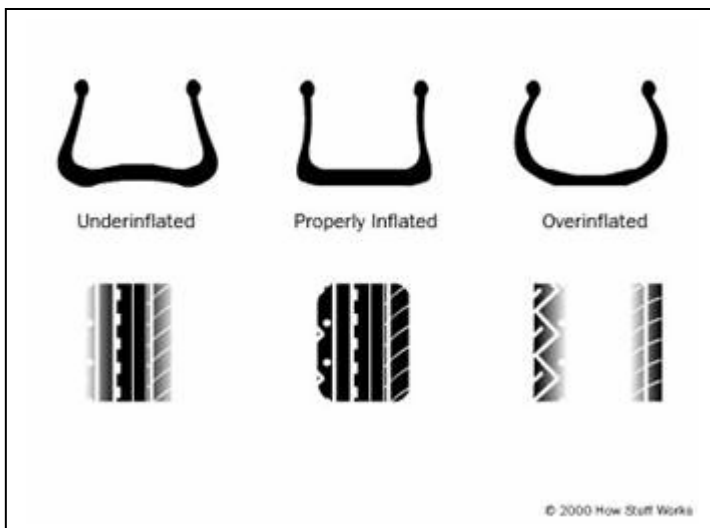


*Did you know that each month, three out of four drivers wash their cars,
while only one out of seven correctly checks tire pressure?
Check your owner's manual for the recommended tire pressure from
the manufacturer!*

**Use Pneutronic frequently!
It is easy, safe and precise.
Don't let your tires unassisted!**



Problems With Tires



Underinflation may wear more out the tires on the outside than the inside. It also reduces the fuel efficiency and increases heat buildup in the tires. It is important to check the tire pressure with a gauge at least once a month.

Overinflation wears out the tires in the center of the tread. The tire pressure should never

exceed the maximum listed on the side of the tire. Car manufacturers often suggest a lower pressure, which gives the tires a softer ride.

<http://auto.howstuffworks.com/tire5.htm>

